

Enclosure: Terminal Boxes, DTR Series



Flameproof and Dust protection by enclosure

Zone 1 & 2 – 21 & 22

Application

The DTR terminal boxes are designed for taps, splices or connecting of conductor for control and instrument. These boxes are suitable for explosive atmospheres Zone 1, 2 and Zone 21, 22.

Specification

Body and cover : Marine grade copper-free aluminium alloy with polyester powder coated, RAL 7032 (grey)

Sealing (O-ring) : Silicone

Screws : Stainless steel

Electrical Rating

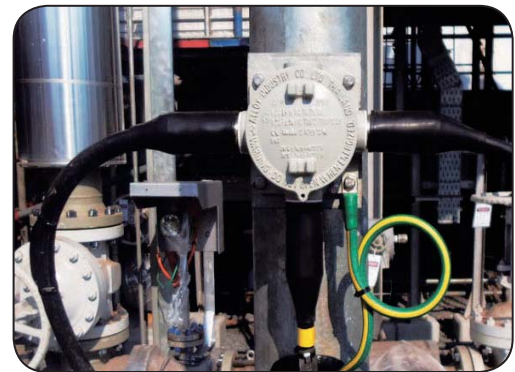
Rated voltage : up to 630V.ac

Rated current : up to 41A.

(as per terminal specification)

Technical Data

Hazardous Area	Gas	Dust
Zones	1 & 2	21 & 22
Equipment Group/Category	Ex d IIC 2G	Ex tb IIC 2D
Symbol of Protection	Ex d IIC T6/T5 Gb	Ex tb IIC T80°C/ T100°C Db IP66
Certificate	Nemko 12 ATEX 1249	
Conformity to Standards	EN 60079-0:2009, EN 60079-1:2007, EN 60079-31:2009	
Ambient Temperature	-20°C to +55°C	
Index of Protection	IP66	
Mounting	Wall type	
Entries	NPT or Metric thread	
Terminal	Terminal block for 0.5- 6 mm. ² cable	
Mechanical resistance	≥7Nm. of impact energy	



Catalogue Number Logic

DTR -	■	■	-	■ ■	-	□ T		
Series	Enclosure	Outline Diagram		Entries		Terminals		
1	Size 1	C 2-ways Through-feed	M0	M16x1.5	N1	Ø1/2" NPT	2T	2-Poles
2	Size 2	L 2-ways Angle	M1	M20x1.5	N2	Ø3/4" NPT	3T	3-Poles
3	Size 3	T 3-ways	M2	M25x1.5	N3	Ø1" NPT	4T	4-Poles
		X 4-ways	M3	M32x1.5	N4	Ø1-1/4" NPT	5T	5-Poles
			M4	M40x1.5	N5	Ø1-1/2" NPT	6T	6-Poles
			M5	M50x1.5	N6	Ø2" NPT	8T	8-Poles
			M6	M63x1.5			10T	10-Poles
								(see terminal selection chart)



Terminal Selection Chart

TB Model	Rated Current	Rated Voltage	Wire Size	Maximum Numbers of Terminals (Respective to the Temperature Class)		
				Size 1 (DTR-1 □)	Size 2 (DTR-2 □)	Size 3 (DTR-3 □)
DR4/6.Ex	30A.	275V.	0.5 - 4.0 mm. ²	6-Poles	8-Poles	10-Poles
ZS4	32A.	630V.	0.5 - 4.0 mm. ²	3-Poles	5-Poles	8-Poles
ZS6	41A.	630V.	0.5 - 6.0 mm. ²	-	-	6-Poles



Enclosure: Terminal Boxes, DTR Series



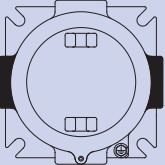
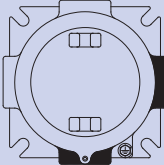
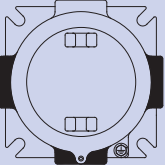
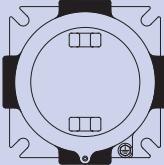
Flameproof and Dust protection by enclosure

Zone 1 & 2 – 21 & 22

Maximum Number of Terminal Permitted for Load Current

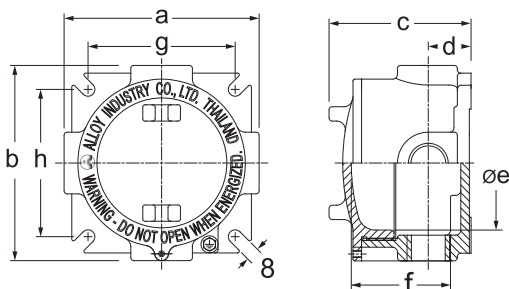
Current (A)	Cross-section in mm. ² DTR1-□					Current (A)	Cross-section in mm. ² DTR2-□					Current (A)	Cross-section in mm. ² DTR3-□				
	1.5	2.5	4	6	10		1.5	2.5	4	6	10		1.5	2.5	4	6	10
30			8	16		30			9	19		30	2	12	23		
10	34	In this area any number of terminals can be added to maximum physical content.				10	39	In this area any number of terminals can be added to maximum physical content.				10	48	In this area any number of terminals can be added to maximum physical content.			
16	11	22	25			16	13	26	102			16	16	32	125		
20	4	13	87			20	5	15	29			20	6	18	36		
25		6	14	27		25		7	16	32		25		9	20	39	
35	Fitting in this area is not allowed.		4	10	27	35	Fitting in this area is not allowed.		5	12	31	35	Fitting in this area is not allowed.		6	15	38
50					8	50				10	50					2	12

Ordering Requirements

Entries		Outline Diagram for Entries	Enclosure Size	Cat. No. *	Entries		Outline Diagram for Entries	Enclosure Size	Cat. No. *	
Metric	NPT				Metric	NPT				
M16x1.5		C type 2-ways Through-Feed 	Size 1	DTR-1C-M0-□ T	M16x1.5	L type 2-ways Angle 	Size 1	DTR-1L-M0-□ T		
M20x1.5				DTR-1C-M1-□ T	M20x1.5			DTR-1L-M1-□ T		
M25x1.5				DTR-1C-M2-□ T	M25x1.5			DTR-1L-M2-□ T		
	Ø1/2"				Ø1/2"					
	Ø3/4"				Ø3/4"					
M32x1.5			Size 2	DTR-2C-M3-□ T	M32x1.5		Size 2	DTR-2L-M3-□ T		
M40x1.5		DTR-2C-M4-□ T		M40x1.5	DTR-2L-M4-□ T					
		Ø1"			Ø1"					
	Ø1-1/4"			Ø1-1/4"						
M50x1.5		Size 3		DTR-3C-M5-□ T	M50x1.5	Size 3		DTR-3L-M5-□ T		
M63x1.5				DTR-3C-M6-□ T	M63x1.5			DTR-3L-M6-□ T		
			Ø1-1/2"		Ø1-1/2"					
	Ø2"			Ø2"						
M16x1.5			T type 3-ways 	Size 1	DTR-1T-M0-□ T		M16x1.5	X type 4-ways 	Size 1	DTR-1X-M0-□ T
M20x1.5					DTR-1T-M1-□ T		M20x1.5			DTR-1X-M1-□ T
M25x1.5		DTR-1T-M2-□ T			M25x1.5	DTR-1X-M2-□ T				
	Ø1/2"				Ø1/2"					
	Ø3/4"				Ø3/4"					
M32x1.5		Size 2		DTR-2T-M3-□ T	M32x1.5	Size 2	DTR-2X-M3-□ T			
M40x1.5			DTR-2T-M4-□ T	M40x1.5	DTR-2X-M4-□ T					
			Ø1"		Ø1"					
	Ø1-1/4"			Ø1-1/4"						
M50x1.5			Size 3	DTR-3T-M5-□ T	M50x1.5		Size 3	DTR-3X-M5-□ T		
M63x1.5				DTR-3T-M6-□ T	M63x1.5			DTR-3X-M6-□ T		
		Ø1-1/2"			Ø1-1/2"					
	Ø2"			Ø2"						

* Replace □ with number of terminals (see terminal selection chart)

Dimension



Enclosure Size	Dimension in mm.								Approx. Weight (kgs.)
	a	b	c	d	øe	f	g	h	
Size 1	114	114	83	25	88	58	86	86	0.98
Size 2	124	124	99	34	98	72	96	96	1.65
Size 3	144	144	121	43.5	118	94	123	123	2.35